

# Animal MRI System

## MesoMR 23-060H-I



MesoMR is designed for in-vivo MRI observation of animals launched by Niumag at 2010. It is a permanent magnet system with an intuitive user interface which provides high resolution images . As a powerful and non-destructive MRI instrument, this system is widely used in life sciences for in-vivo study of tissue structures, screening for tumor lesion location and contrast agent dispersion. The imaging operation is very simple. The layer, angle and thickness selection can be completed by three successive steps.

- Magnet: permanent
- Magnet field:  $0.5 \pm 0.05T$
- Probe Size: 60mm
- Effective detection area size : up to  $\varnothing 60\text{mm} \times H60\text{mm}$



### SUZHOU NIUMAG CORPORATION

Add: Floor 1-2, Building 2, Suzhou Software Technology Park, No.78, Keling Rd, Suzhou, Jiangsu, China

Tel : +86-512-62393560

Email: [info@niumag.com](mailto:info@niumag.com)

Web: [www.nmranalyzer.com](http://www.nmranalyzer.com)

### Korea South

Add: 3F, A-316, 212 Olympic-ro, Songpa-gu, Seoul 05553 Rep of Korea

Tel : +82-2-2145-4360

Email: [jkbhang@jktac.co.kr](mailto:jkbhang@jktac.co.kr)

Web: [www.jkxtac.com](http://www.jkxtac.com)

# Make the best LF-NMR

## Functions

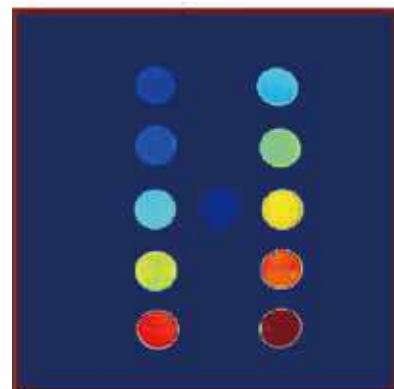
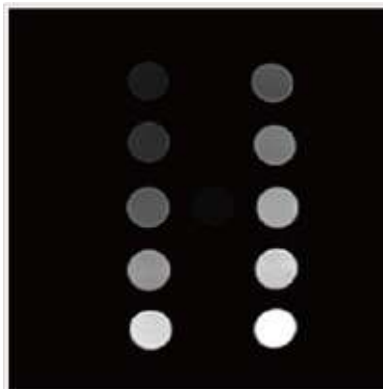
- Drug delivery in body;
- Contrast agent in body;
- Evaluation of drug treatment of cancer;
- Drug targeting judgment;
- Screening for tumor lesion location;



## Applications

### Contrast agent MRI

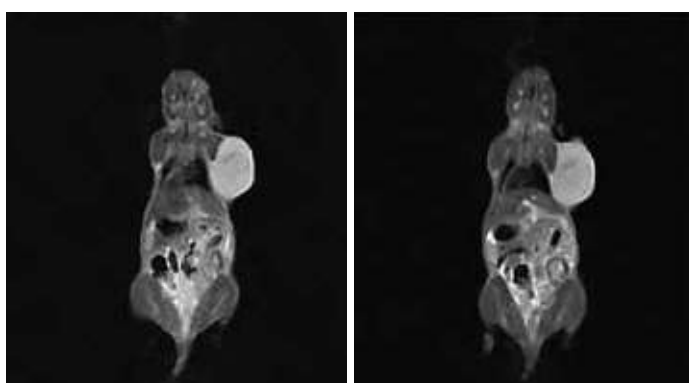
| Group DTPA |                  | Group BSA  |
|------------|------------------|------------|
| 0.02mmol/l |                  | 0.02mmol/l |
| 0.05mmol/l |                  | 0.05mmol/l |
| 0.1mmol/l  | H <sub>2</sub> O | 0.1mmol/l  |
| 0.2mmol/l  |                  | 0.2mmol/l  |
| 0.5mmol/l  |                  | 0.5mmol/l  |



### Contrast agent MRI of mice heart



### Contrast agent MRI of subcutaneous tumor



### Screening for contrast agent metabolism in kidney

